



# GMT MONTHLY MEMBERSHIP PROGRESS REPORT

Results as of: 2/29/2020

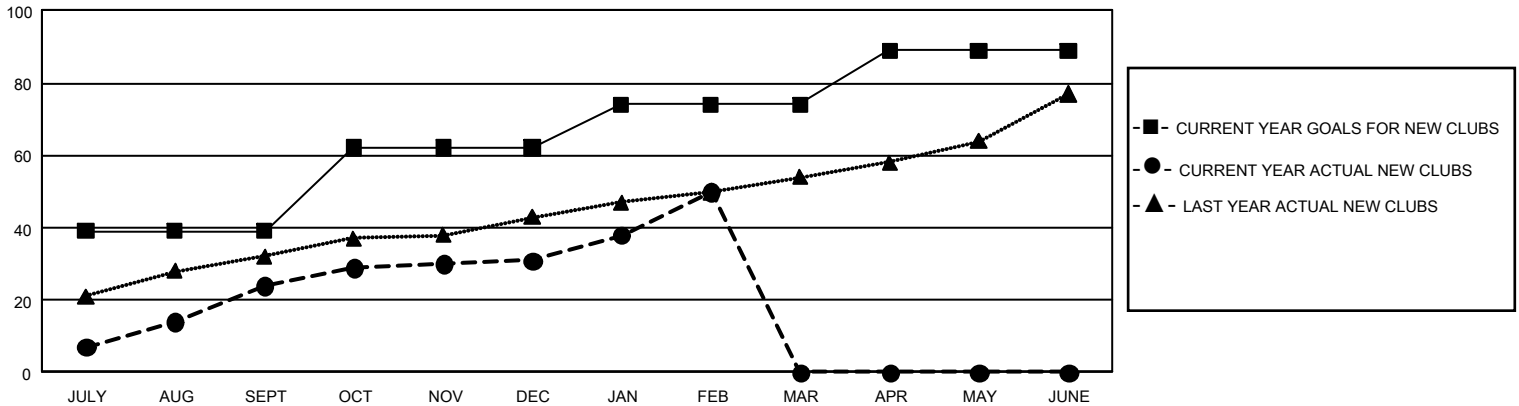
## GMT Constitutional Area 6, Group J

GMT: OPEN

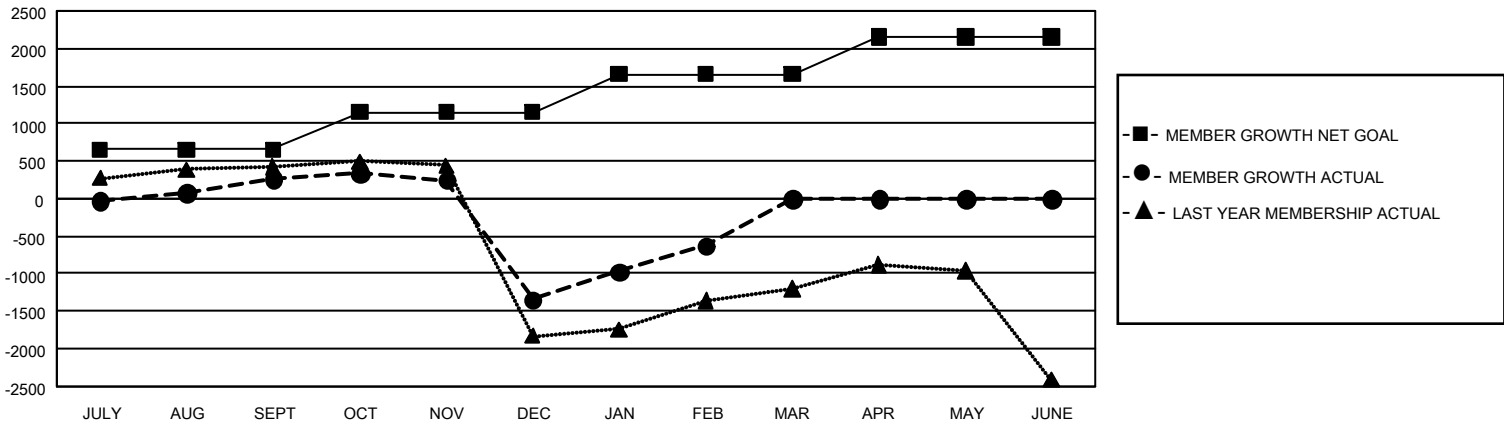
REPORT DOES NOT INCLUDE CLUBS IN UNDISTRICTED AREAS.

Clubs				Members			
RESULTS FOR 2019-2020				RESULTS FOR 2019-2020			
QUARTER	NEW CLUB GOAL	NEW CLUBS	DROPPED CLUBS	QUARTER	MEMBER GROWTH NET GOAL	MEMBER GROWTH ACTUAL	DROPPED MEMBERS ACTUAL (including transfers)
JULY/AUG/SEPT	117	24	3	JULY/AUG/SEPT	1,965	1,483	1,014
OCT/NOV/DEC	69	7	50	OCT/NOV/DEC	1,485	501	2,048
JAN/FEB/MAR	36	19	7	JAN/FEB/MAR	1,530	1,441	430
APR/MAY/JUNE	45	0	0	APR/MAY/JUNE	1,470	0	0

GOALS AND ACTUAL NEW CLUBS CUMULATIVE



GOALS AND ACTUAL MEMBERS CUMULATIVE



DROPPED CLUBS: 60	435 CLUBS OF 1,055 ADDED 1 OR MORE NEW MEMBERS	<u>GENDER DISTRIBUTION</u>	
		MALE	22,088 (69.79%)
		FEMALE	9,561 (30.21%)
<u>DROPPED MEMBERS</u>		TOTAL FAMILY UNIT MEMBERS 16,583	
DECEASED	55	FAMILY MEMBERS PAYING HALF DUES 9,547	
CLUB CANCELLED	1,255		
OTHER	2,181		
<b>TOTAL</b>	<b>3,491</b>		

[CLICK HERE FOR CUMULATIVE MEMBERSHIP DATA](#)